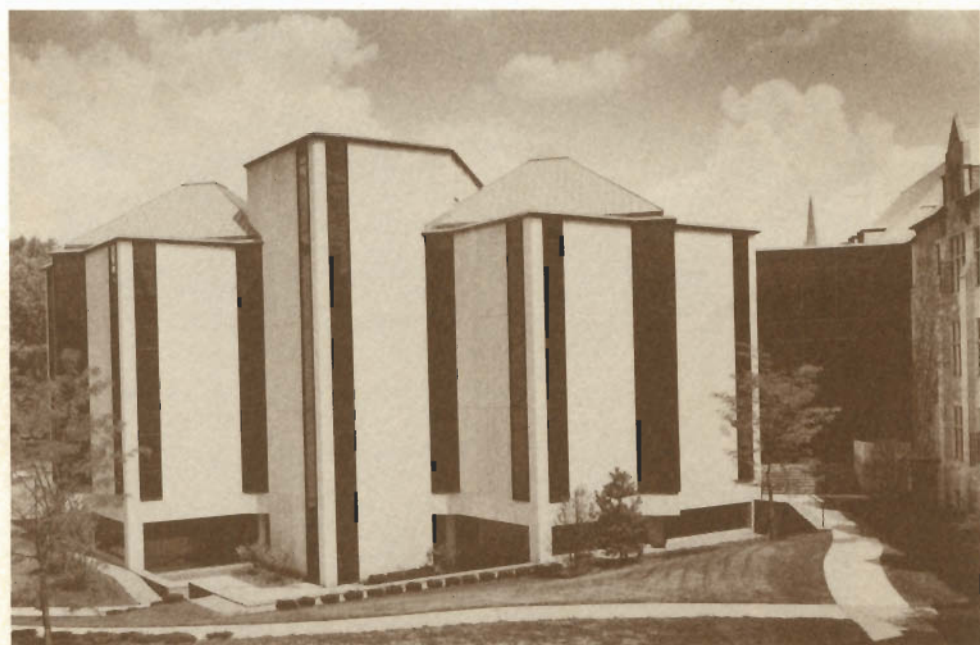


The Rebecca Crown Library



DEDICATION

Tuesday, April 11, 1972

Rosary College

7900 West Division Street, River Forest, Illinois

SPECIAL EXHIBIT

During the dedication there will be special exhibits in the Rare Book Room of the Library. In addition to items from Rosary College's own collection, there will be a particularly noteworthy display of volumes from the personal libraries of famous people and presentation copies from famous persons. This collection is being exhibited through the courtesy of the ARA Historical Foundation, Independence Square, Philadelphia.



THE REBECCA CROWN LIBRARY

Rosary College
River Forest, Illinois

Tuesday, April 11, 1972

MASS 1:15 o'clock Auditorium
Homily — *Rev. Robert M. Maloy*

RECEPTION 2:00 o'clock Foyer, Fine Arts Building

DEDICATION 3:00 o'clock Auditorium

Tribute to the Crown Family and Other Donors

Sister Candida Lund, President

Dedication Address

Harry Mark Petrakis

Blessing of the Library

Rev. Donald F. Lund

Tours of the Library

Rebecca Kranz Crown

Rosary College's Library is named for the wife of Colonel Henry Crown, Chicago philanthropist, and the library's principal benefactor. Rebecca Kranz Crown was born in Chicago on February 13, 1900, and was graduated from Chicago elementary and high schools. She was married on August 12, 1920. She died October 31, 1943.

A partial view of the audio-visual center.



*I*n the summer of 1922 when St. Clara College, Sinsinawa, Wisconsin, moved to River Forest, Illinois, and adopted its new name, Rosary College, the nucleus for the library came with it. The first reference books were dispensed from packing cases on the third floor of Power Hall. The library opened in October. Essential books were shelved for the first time in the third floor lobby, then the library moved to what is now the sisters' community room and a nearby stack room.

The beautiful wing called the Mazzuchelli Building was built principally to house the library. It was designed by Ralph Adams Cram and executed by his associate, Mr. Charles Kallal. The entire second floor was intended for the library — two huge rooms with high arched ceilings. But the separate building planned for a chapel was never achieved, and one of the rooms was, and still is, used as the chapel. The library occupied one large room, with adjacent stack space, for forty years, from 1931 to 1971.

Sister Reparata Murray was the first librarian, and she established the School of Library Science in 1930.

THE REBECCA CROWN LIBRARY

The Indiana limestone and Graylite glass building is contemporary in style, shaped like a St. Andrew's cross, and linked on the east to Lewis Memorial Hall. The main entrance and lobby are in the glass-walled area between the new structure and Lewis. Diagonal placement of the building gives a feeling of space and avoids direct views across narrow court areas.

Inside, at the building's center, daylight streams down from a roof skylight upon the circular staircase, spiraling up through three floors. The open stairwell visually ties the floors together, relating the different sections of the library. This central area is fully open on the west, through two-story high windows, to a view of the wooded campus beyond a terrace with a small fountain.

The vertical striation of the limestone blocks, with the high, narrow Graylite glass bays and the pitched roofs with pyramidal sky dome units give the structure a summital sweep that harmonizes with the Gothic architecture of the existing campus buildings, also of limestone.

The vertical glass panels and bays were designed to control outdoor lighting and introduce pleasing vistas of trees and lawn. On the ground floor, windows run horizontally.

Untinted glass is used in the central skylight and the four smaller domed skylights focusing daylight on third-floor reading areas.

The building is air-conditioned with air ceilings throughout providing draft-free ventilation.

The Graduate School of Library Science is one self-contained unit on the ground floor, with the three floors above devoted to the Library, used by 800 undergraduate students in the liberal arts coed college as well as 400 graduate students in the library science school.

The graduate school has several convenient entrances, while all library traffic, in and out, passes the charging desk.



The two-story high west lounge leads to a balcony terrace with a small pool and fountain. The cantilevered terrace, overhanging the floor below, has limestone benches which act as part of the railing.

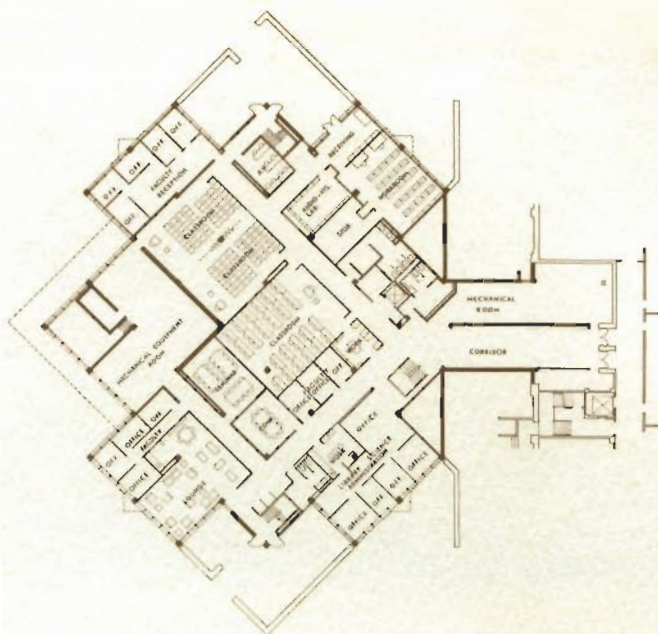


Carrels and study tables on the second floor.



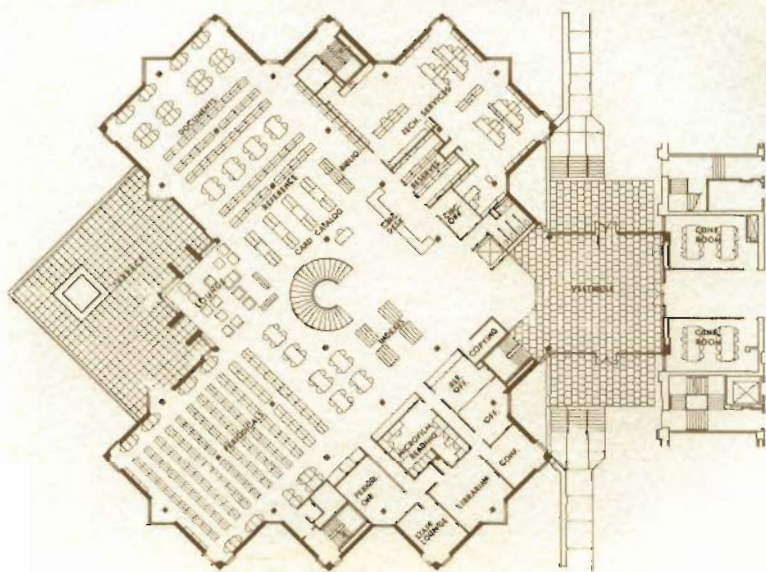
View from entrance — circulation desk, card catalog and reference shelves.





Window areas on the ground floor are generally used for offices and lounges, with classrooms in the inner core. This floor accommodates administrative and faculty offices, classrooms, lecture halls, conference rooms and all departments of the Graduate School of Library Science, as well as student lounge, typing room, storage, locker space and a delivery and receiving area for the building.

On the first floor are circulation desk with reserve shelves, card catalog, reference books, periodicals, microform reading room, technical services area, librarians' offices, conference room, lounge area and terrace, and staff lounge. Reading tables are generally grouped toward the center, with study carrels placed around the walls.





Student lounge in the Graduate School of Library Science.



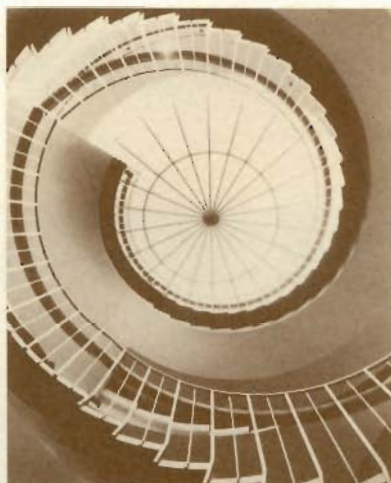
Large windows overlooking wooded lawns give a spacious air to faculty offices.



*Library science class in *Production of Instructional Materials* is learning to prepare films, slides, videotapes and transparencies.*

Administrators at the time of construction and dedication include Sister Candida Lund, O.P., president; Sister Marie Andrew Taylor, O.P., treasurer; Sister Lauretta McCusker, O.P., Dean of the Graduate School of Library Science; and Sister Mary Field, O.P., Chief Librarian.

Coordinator of dedication ceremonies: Sister Mary Therese O'Malley



Central stair and skylight.

Rosary College Board of Trustees

Mr. Dan Herr
Sister Marie Amanda Allard
Mr. Robert Burns
Sister Marie Martine Crowley
Rev. Andrew M. Greeley
Dr. Margaret Healy
Miss Joyce Illig
Mrs. Percy L. Julian
Sister Regina Kelly
Sister Candida Lund, *ex officio*
Sister Nona McGreal
Sister Jane Mowrer
Mr. Frank J. O'Brien
Mr. Donald Sandro
Mrs. Philip D. Sang

BUILDING DATA

Architects: Perkins & Will Corporation

Consultant: Frazer Poole

General Contractor: Kiendl Construction Company

Cost: \$2,718,000 including equipment and furniture

Floor Area: 76,656 sq. ft.

Cost Per Square Foot: \$35.46

Interior Designers: Miller Associates Limited

Interior: Partitions and wall facing use natural finish concrete block, center scored to form pattern of 8" squares. Glazed partitions framed in oak with oak panelling in selected areas.

Floors: Bigelow-Sanford carpeting in bittersweet orange; slate in entrance lobby.

Mechanical: Forced air ventilation with terminal reheat. Steam from the central heating plant on the campus is converted to heated water for reheat coil and perimeter fin tube radiation. Chilled water unit provides summer cooling. Air handling systems ventilate all areas of building. Hydraulic elevator serves all floors.

Electrical: Recessed fluorescent with incandescent accent lighting. Exterior night illumination.

Card Catalog: Jens Risom Design, Inc.

Book Stacks: Estey Corporation

Furniture: Steelcase, Inc.

Seating: Carrels, 242; tables, 228; lounge, 35; miscellaneous, 63.

Books: Total volume capacity, 260,000